

# C.A.B.

## Common Area Barrier



ModTruss<sup>INC</sup>

## Technical data sheet

**Expediting  
Available!**



	Length	Width	Height
<b>Dimensions</b>	48"	48"	72"
<b>Weight</b> (Single Module)	30 Lbs		
<b>Expansion Module</b>	20 Lbs		
<b>Material</b>	PVC/ Polycarbonate		
<b>Setup time</b>	4 min per module		

Single Module \$ 485.24  
Each Expansion \$ 325.18

5 Module package \$ 1,749.00

Sales Tax and shipping not included.

### Features:

Easy Clean surface

Rigid and free standing

Simple assembly, all assembly tools provided.

Expandable and Modular to fit a variety of seating areas

Custom sizes and colors available.

Translucent or opaque.

Fire Retardance: Class A / CC1 Fire-Rated per ASTM E-84

**\*Product is for use in waiting areas for the purposes of reducing cross contamination between occupants.**

TO Order:  
**HANNONRP, LLC.**  
(Authorized ModTruss Dealer)  
606 W 57th St, STE301  
New York City, NY 10019  
USA  
[www.HannonRP.com](http://www.HannonRP.com)  
PH: 01.570.871.1095  
E: [matt@HannonRigging.com](mailto:matt@HannonRigging.com)

Patent pending:

All Product shipped From Fond Du Lac, WI USA

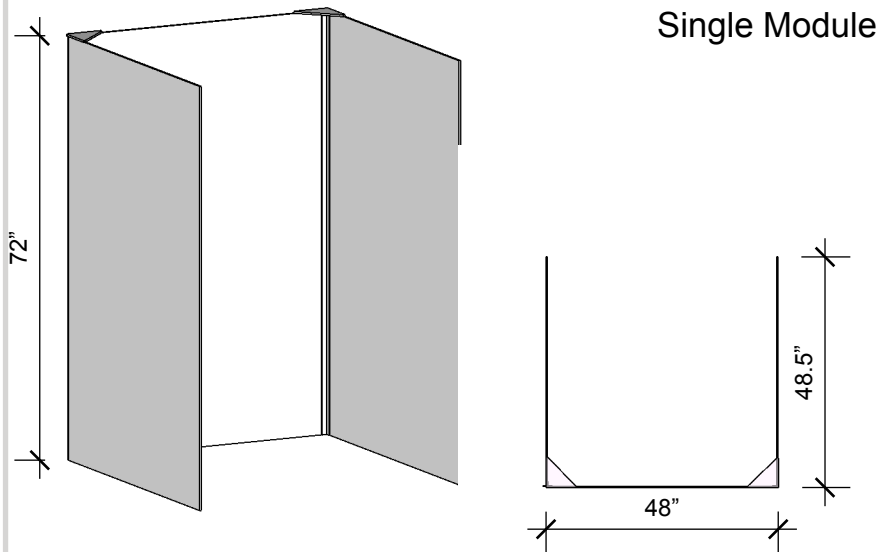
# C.A.B.

Common Area Barrier



ModTruss<sup>INC</sup>

## Technical data sheet



TO Order:

**HANNONRP, LLC.**

(Authorized ModTruss Dealer)

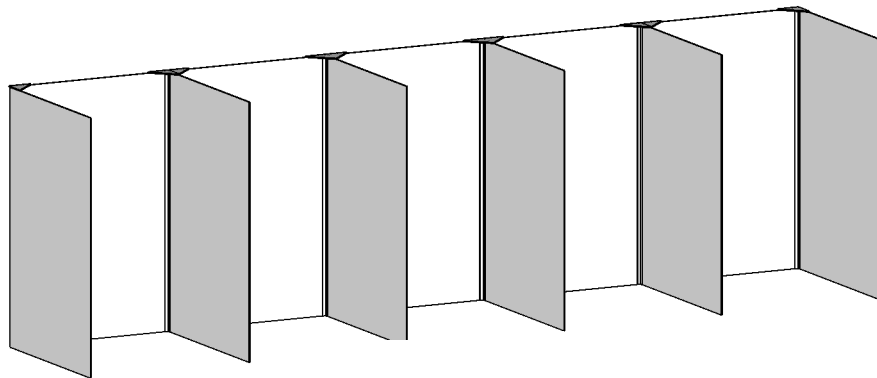
606 W 57th St, STE301

New York City, NY 10019 USA

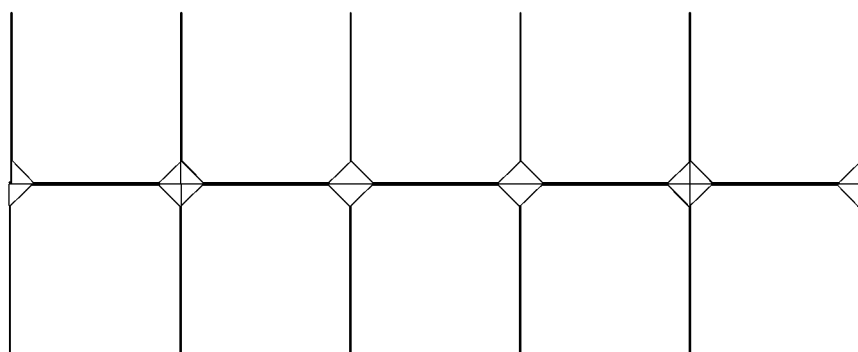
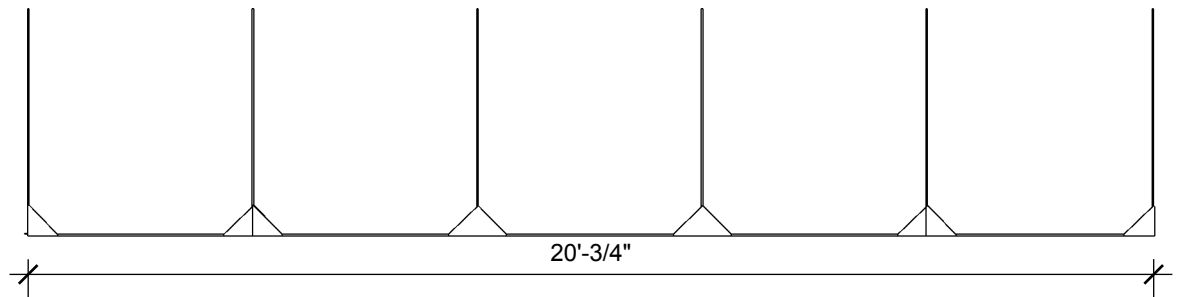
[www.HannonRP.com](http://www.HannonRP.com)

PH: 01.570.871.1095

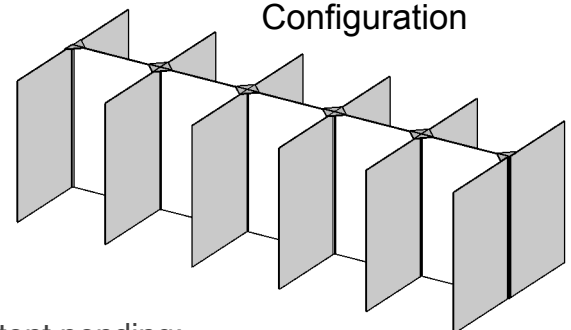
E: [matt@HannonRigging.com](mailto:matt@HannonRigging.com)



5 Module package



Double Expansion  
Configuration



Patent pending:



# C.A.B. (BD)

## Common Area Barrier (Bed Divider)



### Technical data sheet

**Expediting  
Available!**



	Length	Width	Height
<b>Dimensions</b>	96”	96”	84”
<b>Weight</b> (Single Module)	70 Lbs		
<b>Expansion Module</b>	20 Lbs		
<b>Material</b>	PVC/ Polycarbonate		
<b>Setup time</b>	15 min per module		

Single Module \$ 1355.00  
Each Expansion \$ 940.00

5 Module package \$ 4960.00

Sales Tax and shipping not included.

### Features:

Easy Clean surface

Rigid and free standing

Simple assembly, all assembly tools provided.

Expandable and Modular to fit a variety of areas

Custom sizes and colors available.

Translucent or opaque.

Fire Retardance: Class A / CC1 Fire-Rated per ASTM E-84

**\*Product is for reducing cross contamination between occupants.**

TO Order:

**HANNONRP, LLC.**  
(Authorized ModTruss Dealer)

606 W 57th St, STE301  
New York City, NY 10019 USA  
[www.HannonRP.com](http://www.HannonRP.com)  
PH: 01.570.871.1095  
E: [matt@HannonRigging.com](mailto:matt@HannonRigging.com)

Patent pending:

All Product shipped From Fond Du Lac, WI USA

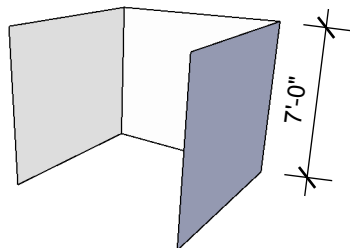
# C.A.B. (BD)

## Common Area Barrier (Bed Divider)

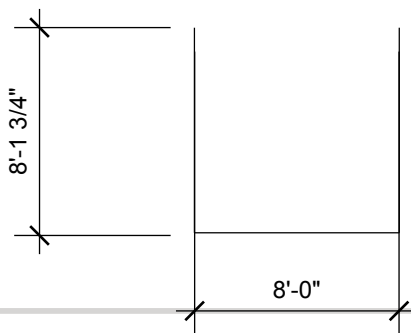


ModTruss<sup>INC</sup>

### Technical data sheet



Single Module



TO Order:

**HANNONRP, LLC.**

(Authorized ModTruss Dealer)

606 W 57th St, STE301

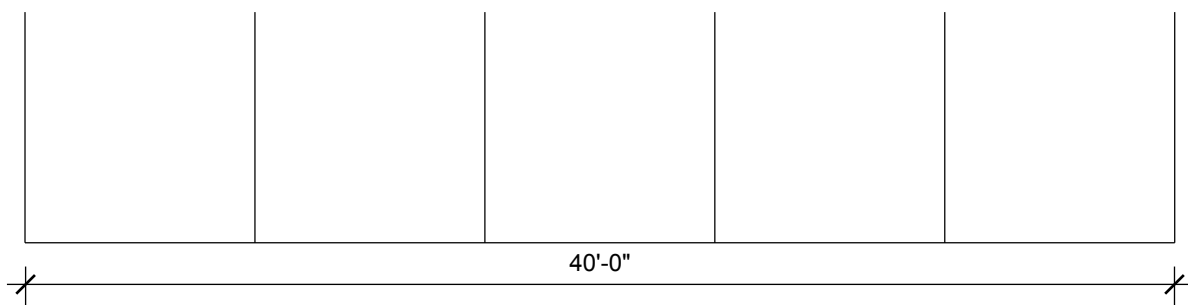
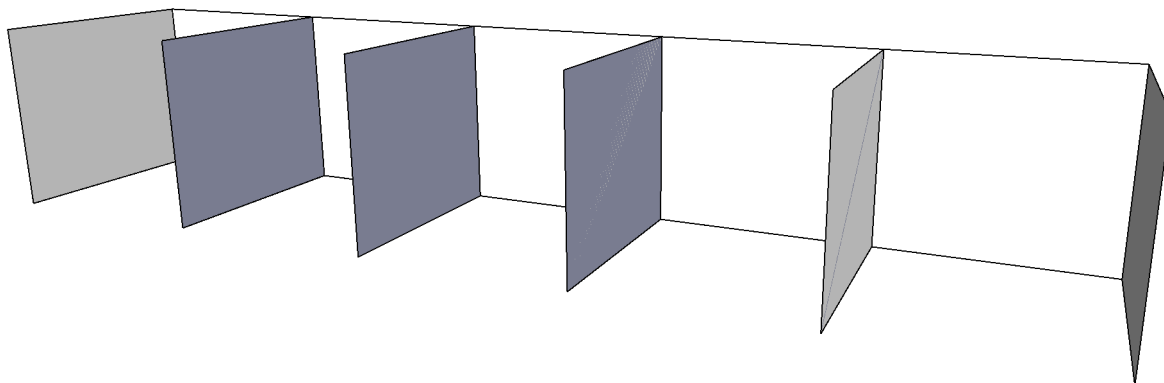
New York City, NY 10019 USA

**[www.HannonRP.com](http://www.HannonRP.com)**

PH: 01.570.871.1095

E: [matt@HannonRigging.com](mailto:matt@HannonRigging.com)

5 Module package



Patent pending:



### Technical data sheet

**Expediting Available!**



	Length	Width	Height	
<b>Dimensions</b> (exterior)	120"	120"	108"	
<b>Dimensions</b> (interior)	96"	96"	96"	
<b>Weight</b> (Single Module)	450 Lbs			
<b>Expansion Module</b>	400 Lbs			
<b>Material</b>	Aluminum and PVC Vinyl			
<b>Setup time</b>	60 min per module (2 techs)			
<b>Lighting</b>	Qty 2 4' Led Tubes			
<b>Filtration</b>	Dual Filters at .03 micron (input and exhaust)			
<b>Air Volume</b>	100 CFM = 12 room changes per hour			
<b>Power Requirements</b>	120v AC 20amp			
<b>Frame</b>	6" ModTruss Aluminum			

Single Module \$ 20,000.00  
Each Expansion \$ 18,000.00

Replacement Vinyl \$ 8,000.00

Sales Tax and shipping not included.

**\*Product is for the purposes of reducing cross contamination between occupants.**

### Features:

- Easy Clean surface
- Reusable
- Rigid and free standing
- Simple assembly, all assembly tools provided.
- Expandable and Modular to fit a variety of areas
- Negative Pressure environment (Inline Fan included)
- Cross airflow with .03 micron filtration at a rate of 100 CFM
- 120v operation with included UPS (uninterruptible power supply)
- Internal Hospital grade outlets with detachable in-room extension whip
- Additional pass thru for external equipment
- Led Lighting
- Attach multiple rooms together to create a donning and doffing area
- Zipper with wide opening to allow personnel wearing full PPE
- Fire Retardancy: Class A / CC1 Fire-Rated per ASTM E-84

**ModTruss can Source Installation Labor for an additional fee.**

TO Order:

**HANNONRP, LLC.**  
(Authorized ModTruss Dealer)

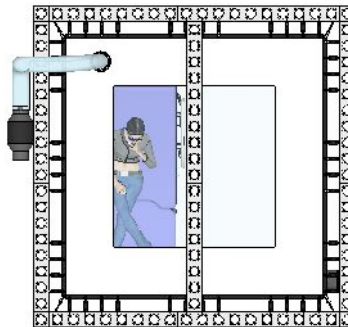
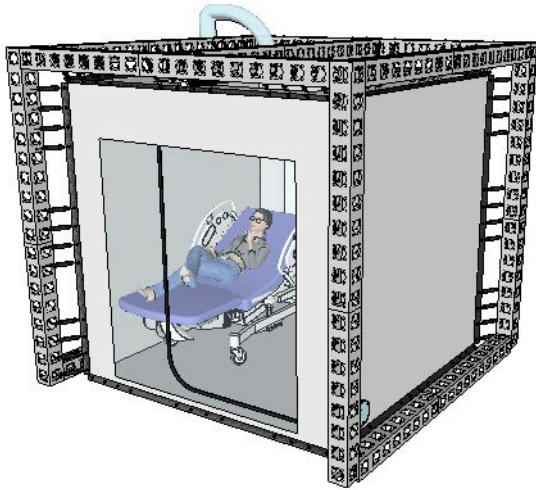
606 W 57th St, STE301  
New York City, NY 10019 USA  
**www.HannonRP.com**  
PH: 01.570.871.1095  
E: matt@HannonRigging.com

Patent pending:

**All Product shipped From Fond Du Lac, WI USA**

### Technical data sheet

### Single Module



TO Order:

**HANNONRP, LLC.**

(Authorized ModTruss Dealer)

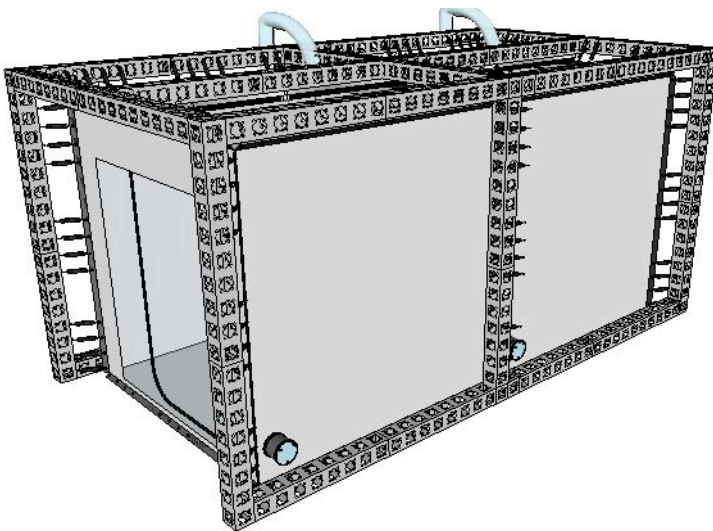
606 W 57th St, STE301  
New York City, NY 10019 USA

[www.HannonRP.com](http://www.HannonRP.com)

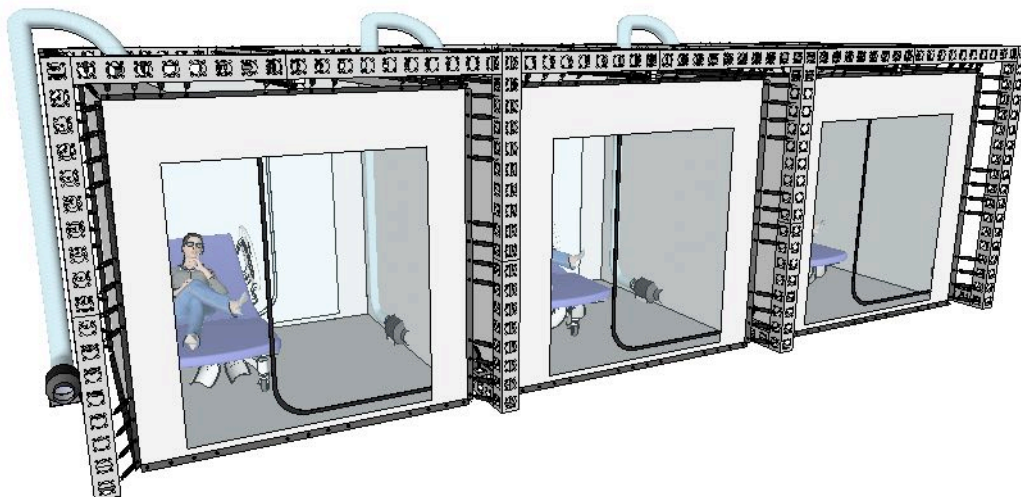
PH: 01.570.871.1095

E: [matt@HannonRigging.com](mailto:matt@HannonRigging.com)

### Donning Doffing Configuration



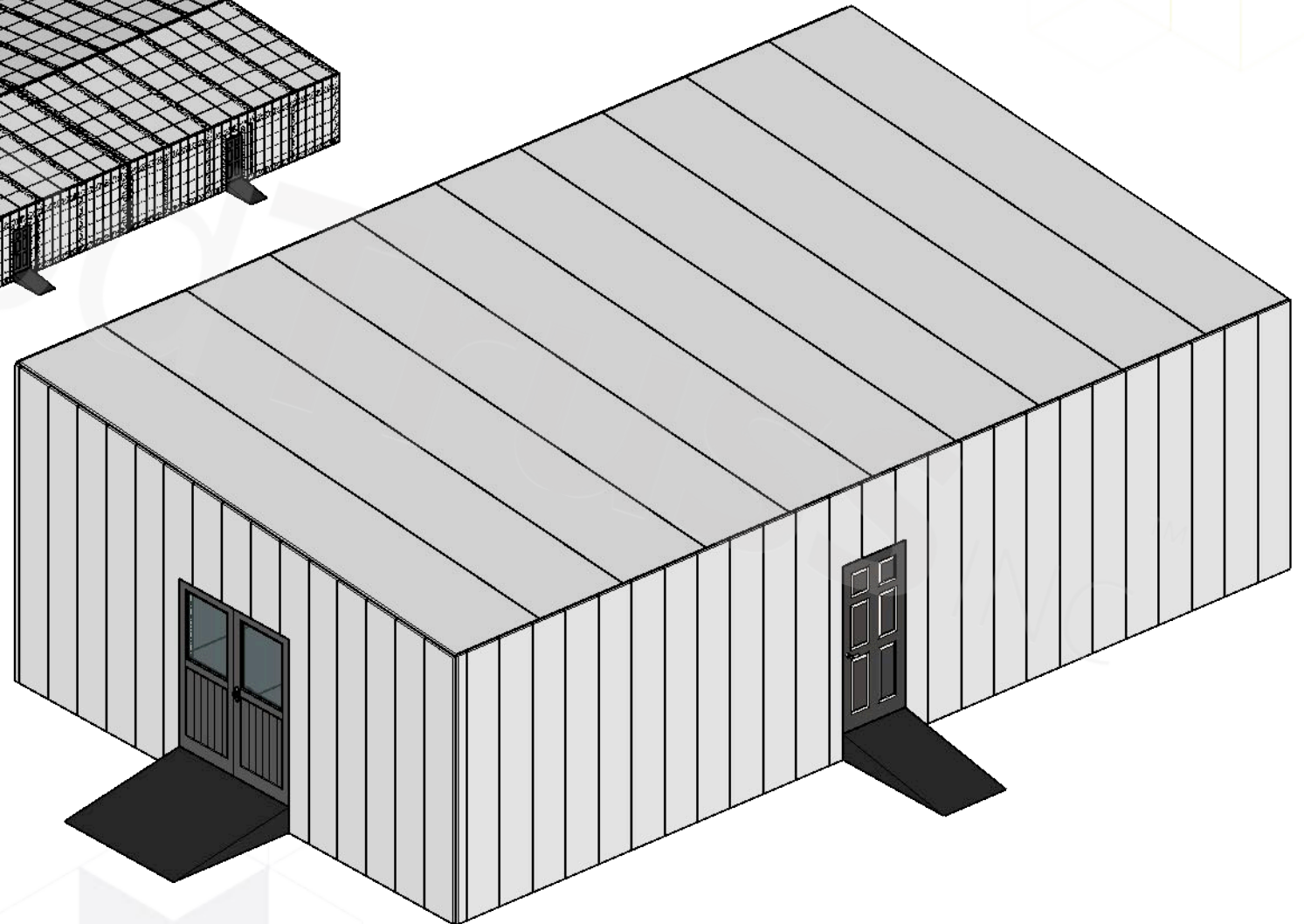
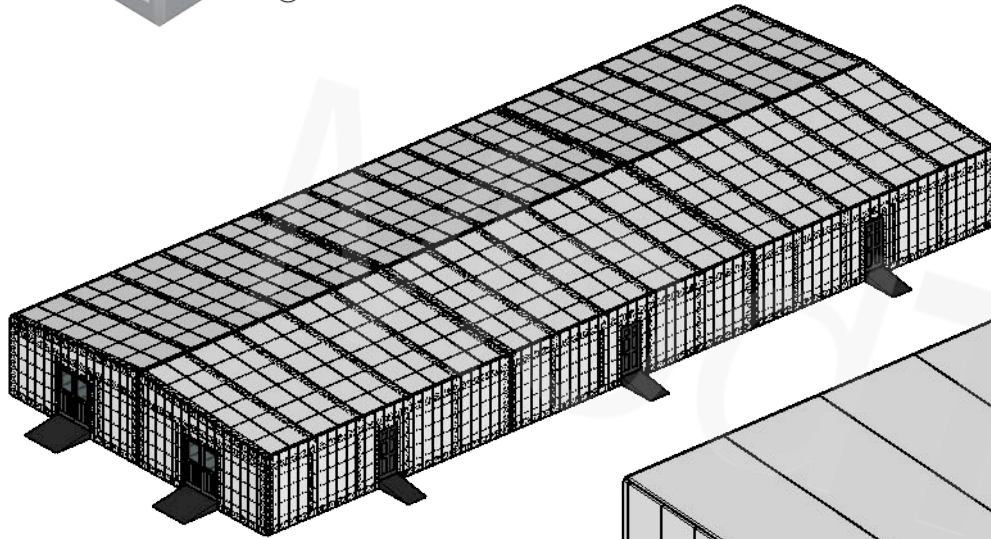
### Multi room expansion



Patent pending:

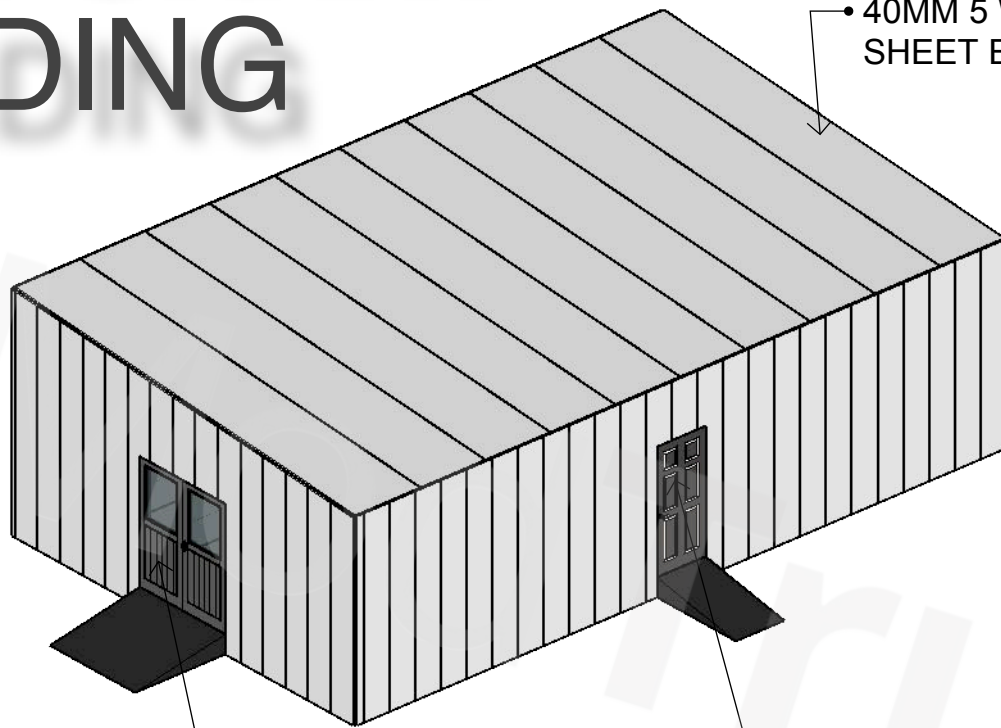


PREPARED BY:  
**ModTruss** INC

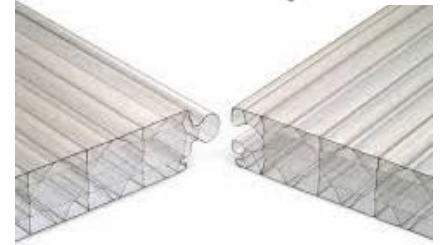
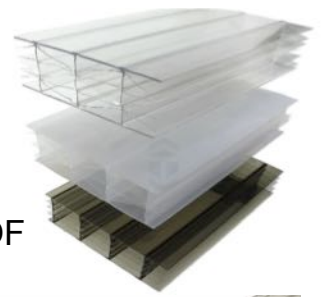




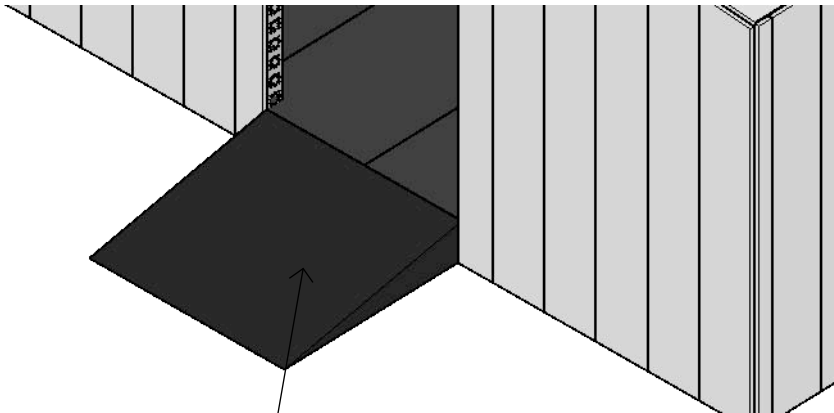
# TEMPORARY BUILDING



• 40MM 5 WALL POLYCARBONATE SHEET EXTERIOR WALLS AND ROOF

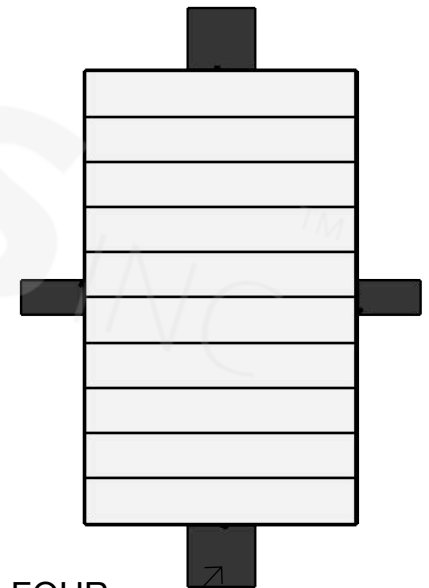


• 6' WIDE DOUBLE DOOR



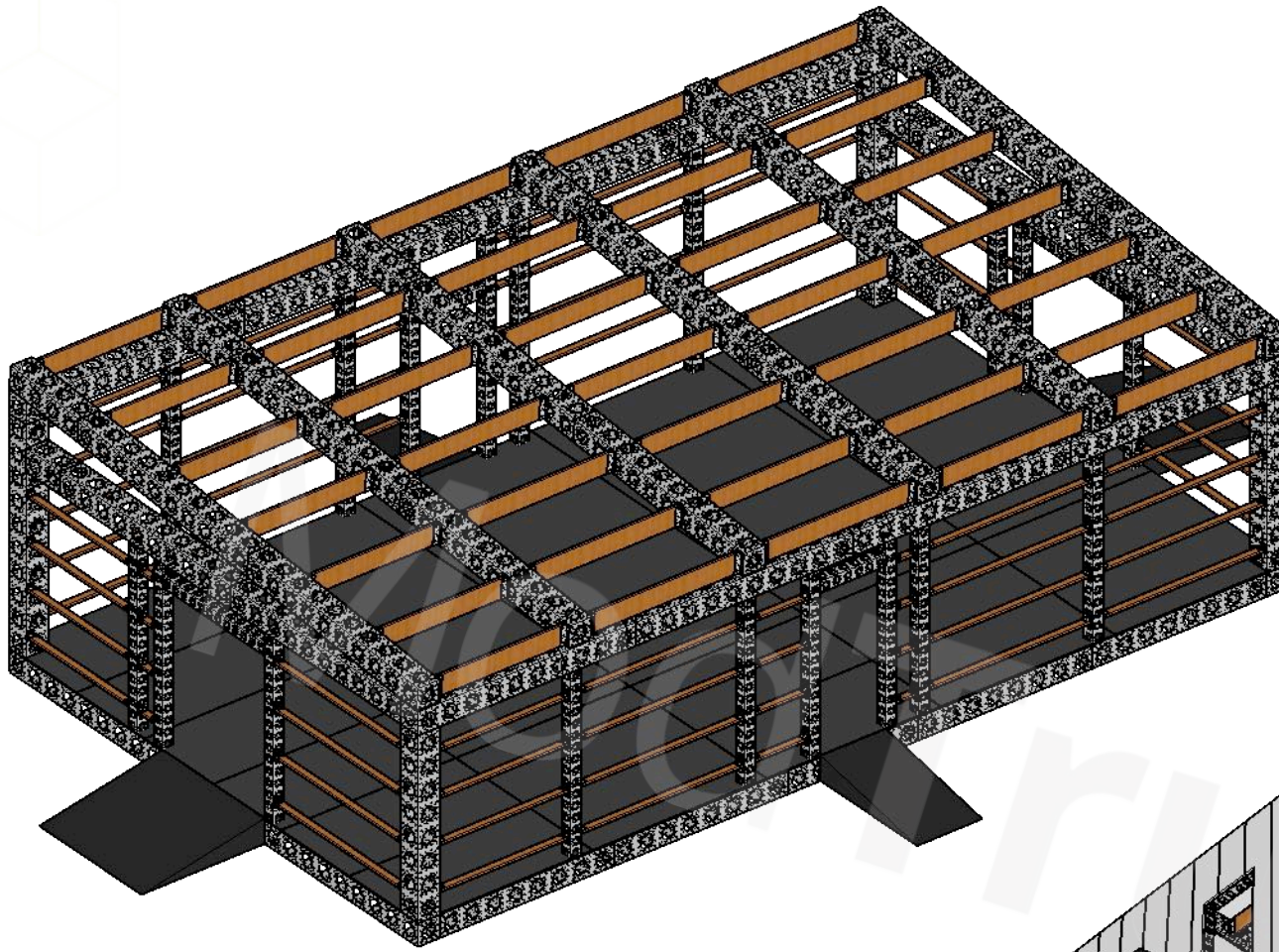
• RAMPS AT EACH DOORWAY

• 3' WIDE SINGLE DOOR

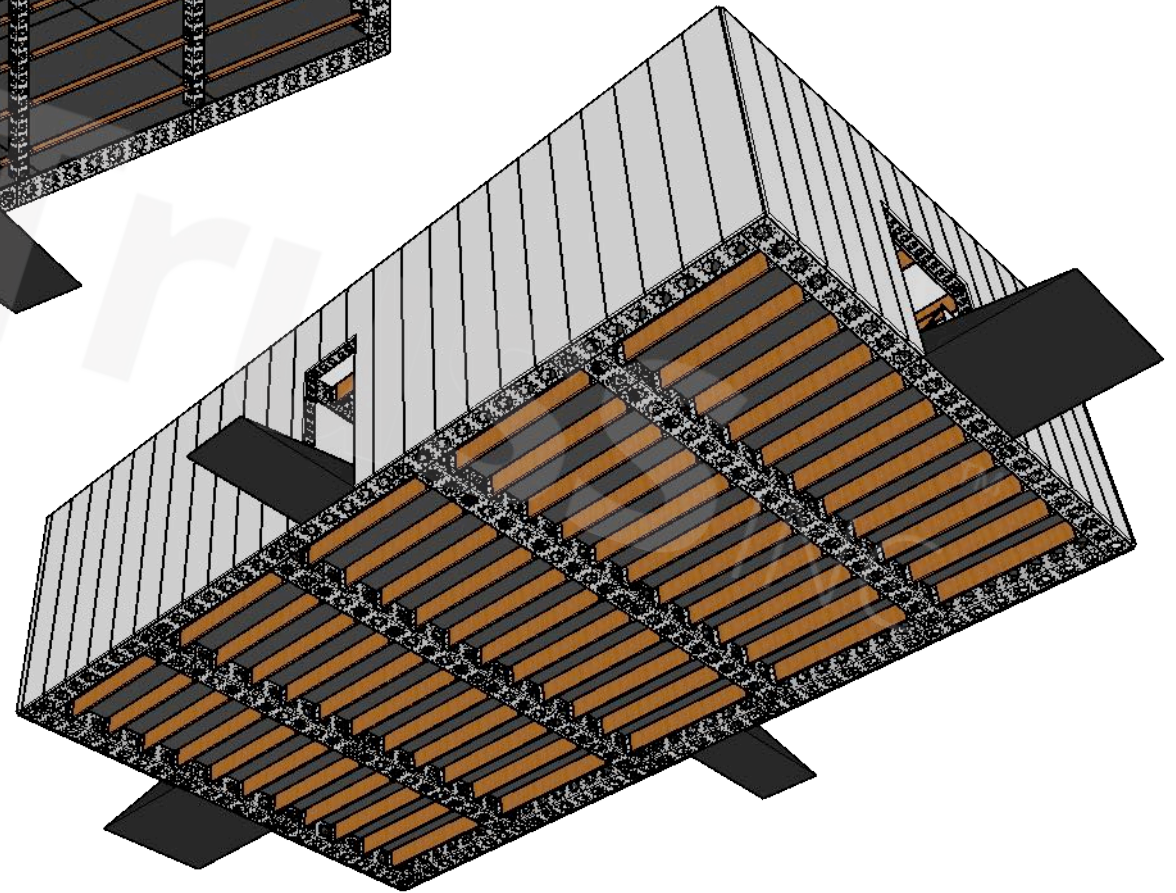


DOORS AND RAMPS ON ALL FOUR SIDES OF EACH 24'X40' UNIT

# TEMPORARY BUILDING

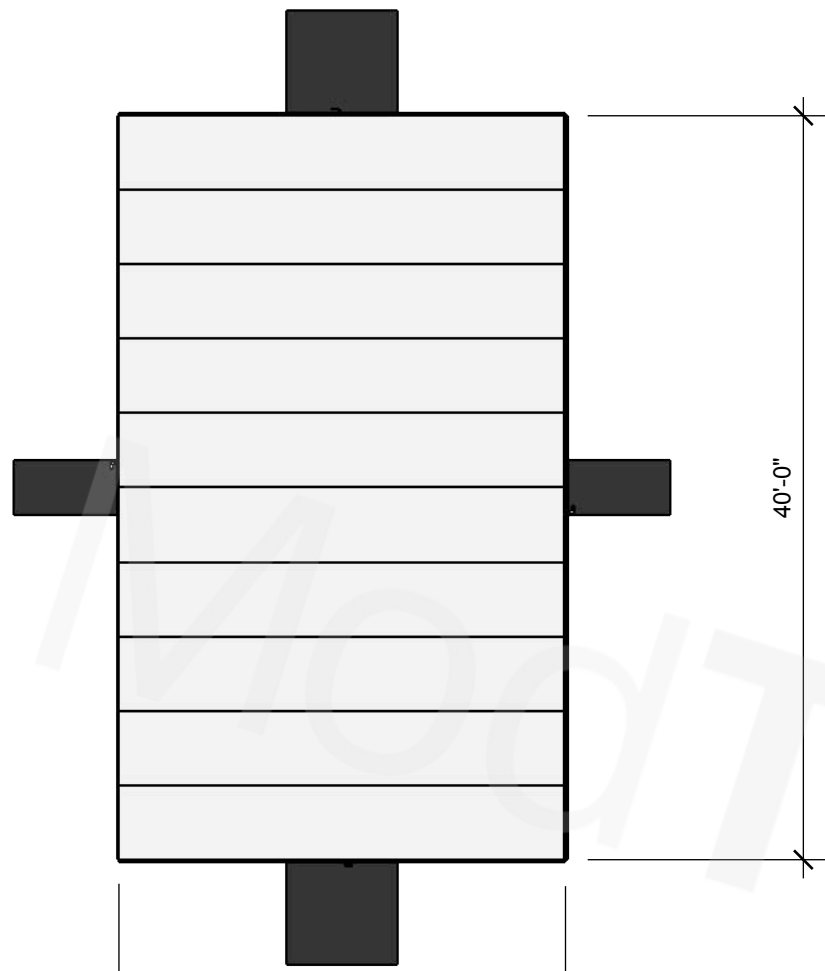


MOTDRUSS STRUCTURAL FRAME

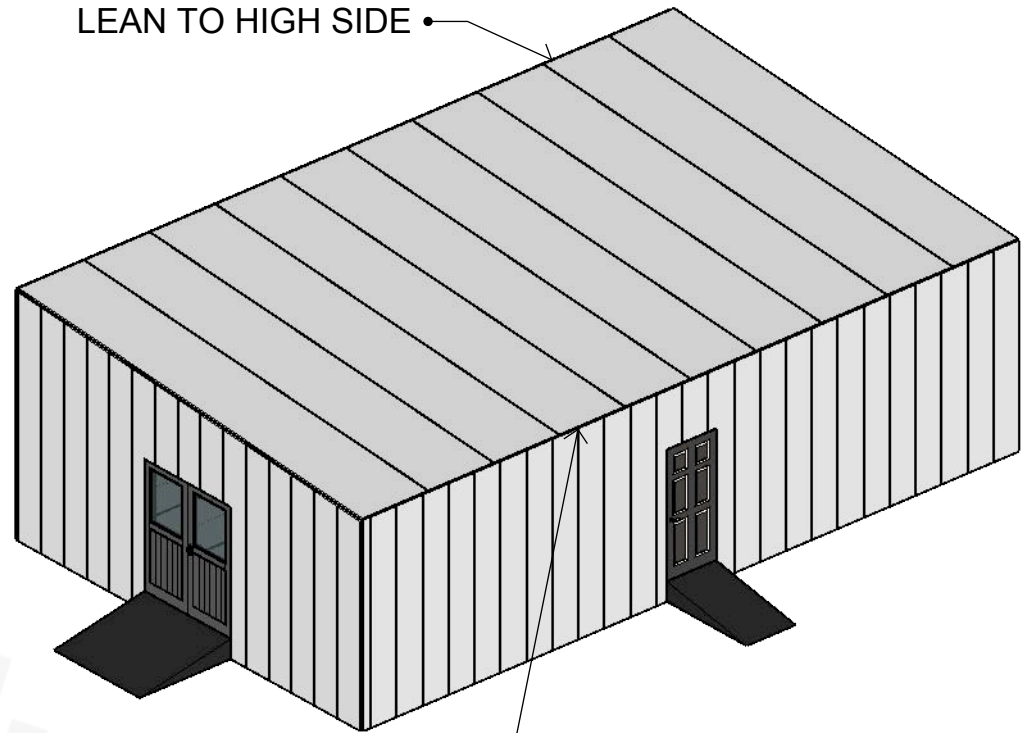


PREPARED BY:

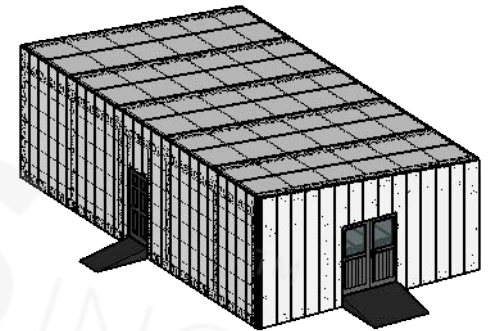
**ModTruss** INC



LEAN TO HIGH SIDE

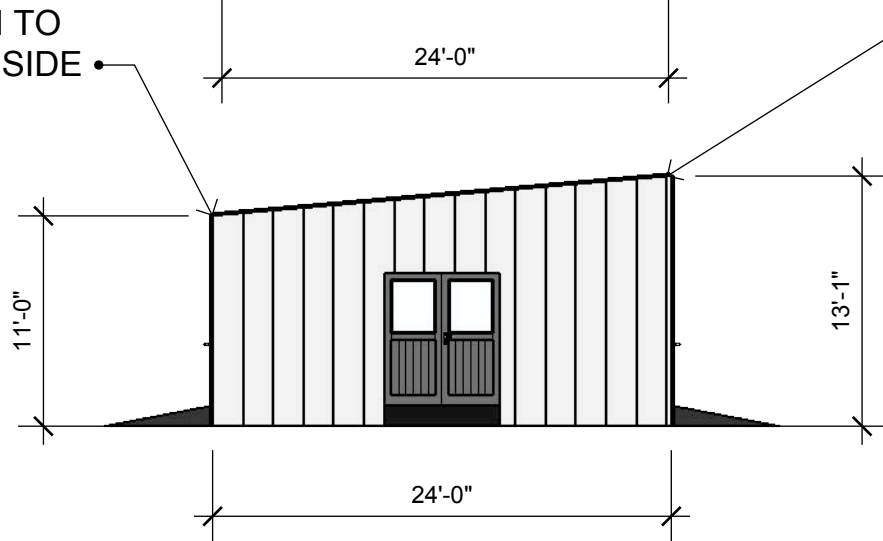


LEAN TO LOW SIDE



LEAN TO LOW SIDE

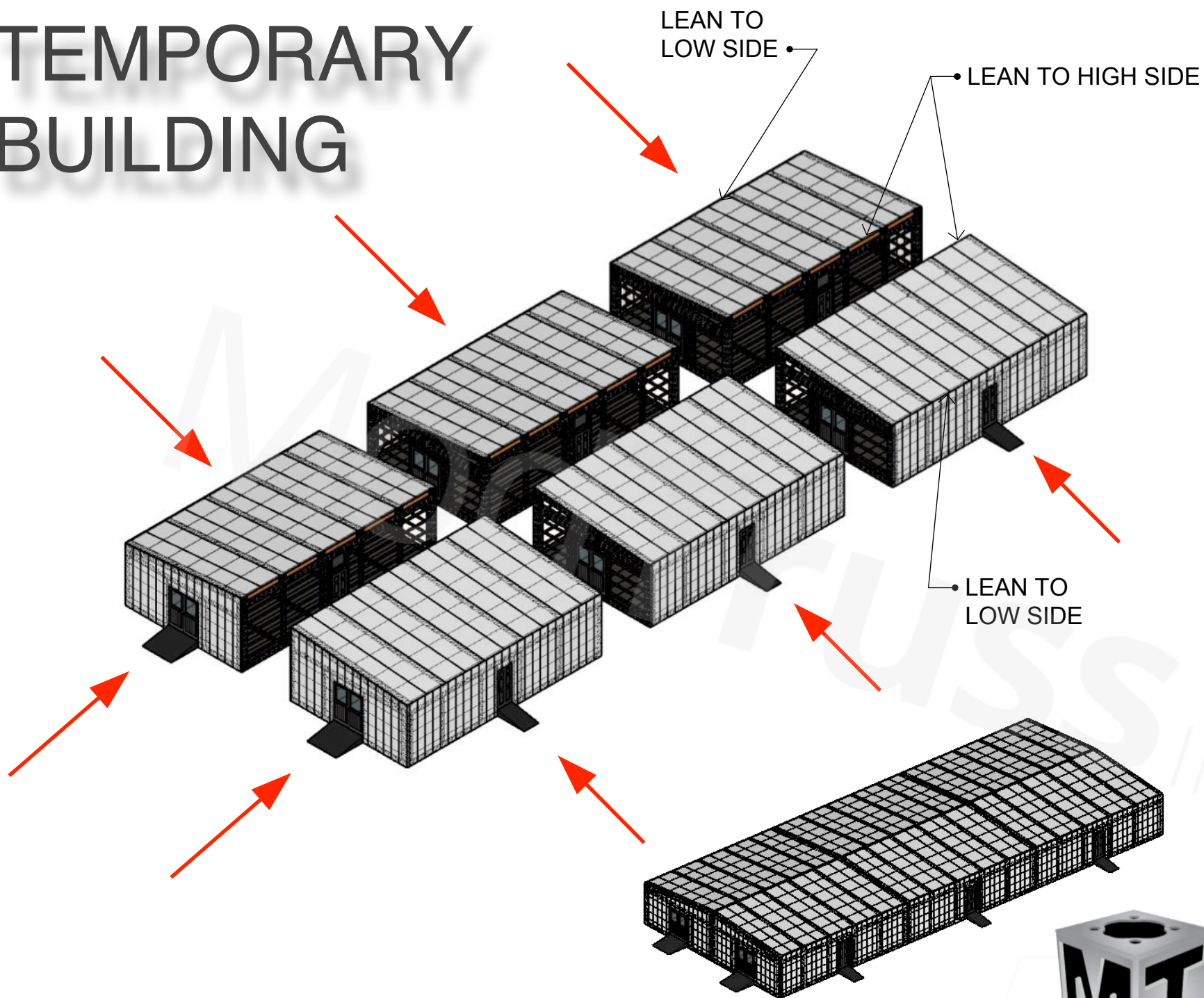
LEAN TO HIGH SIDE



PREPARED BY:  
**ModTruss** INC



# TEMPORARY BUILDING



EACH 24'X40'  
UNIT CAN BE  
JOINED TO  
CREATE AN  
INFINITE SIZE  
TEMPORARY  
BUILDING

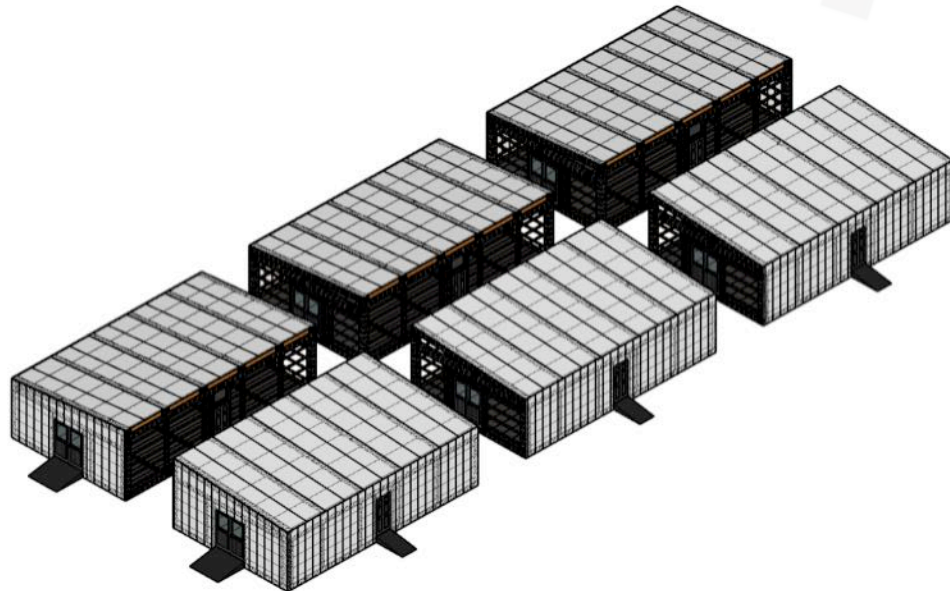
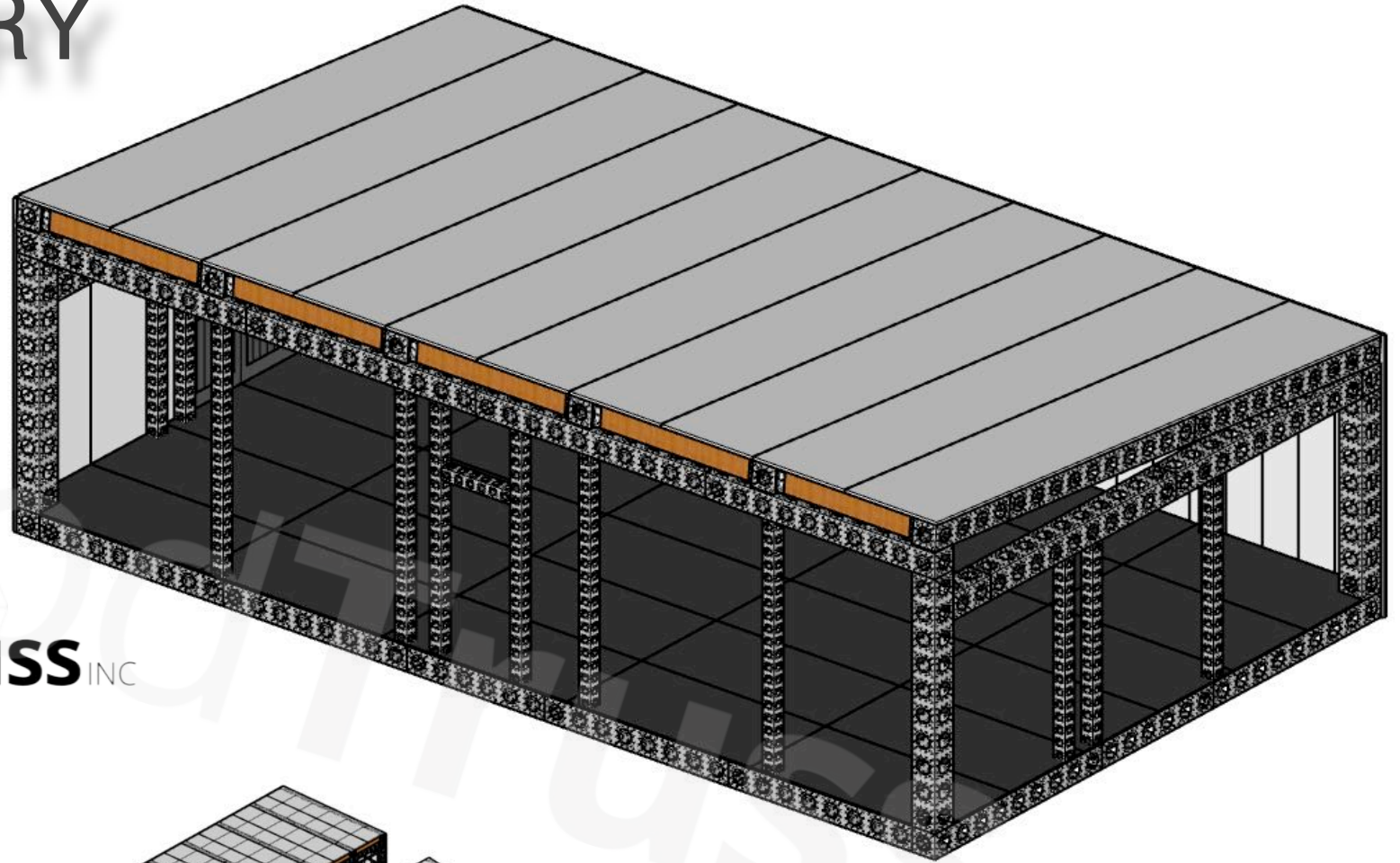


PREPARED BY:  
**ModTruss**

# TEMPORARY BUILDING



PREPARED BY:  
**ModTruss** INC

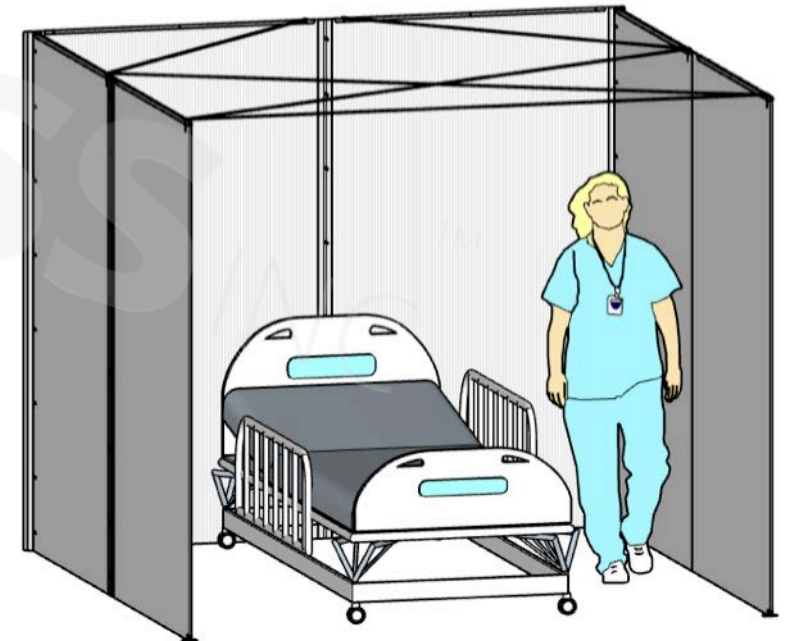
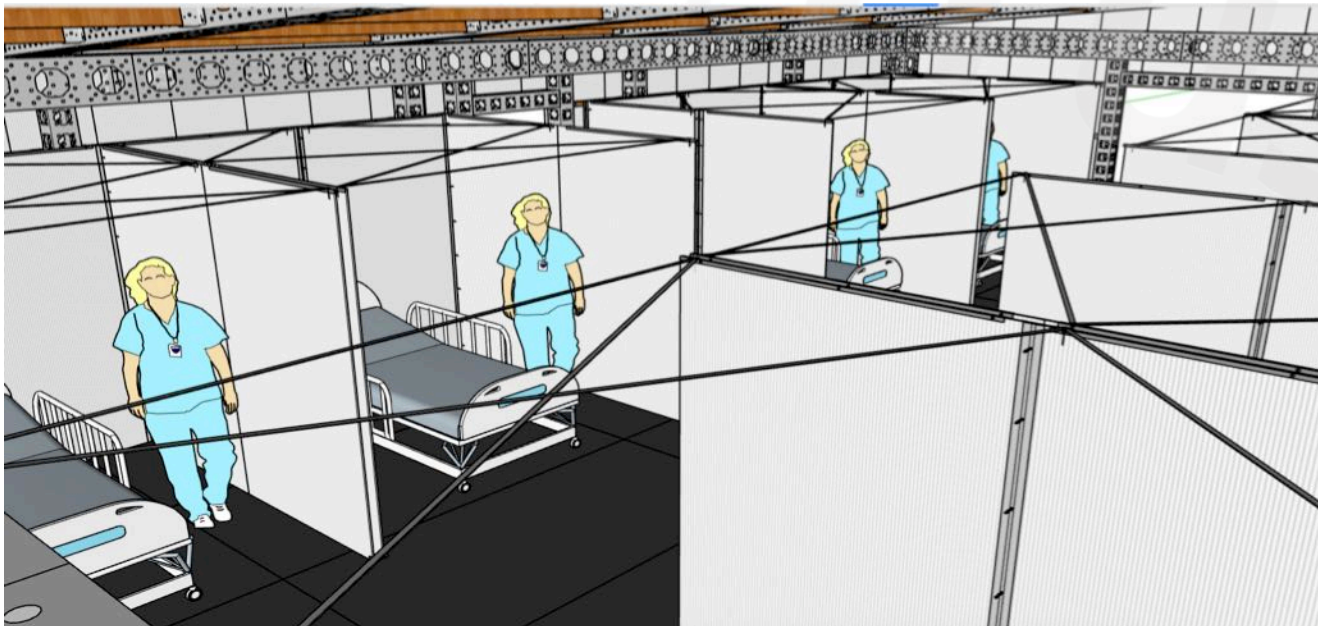
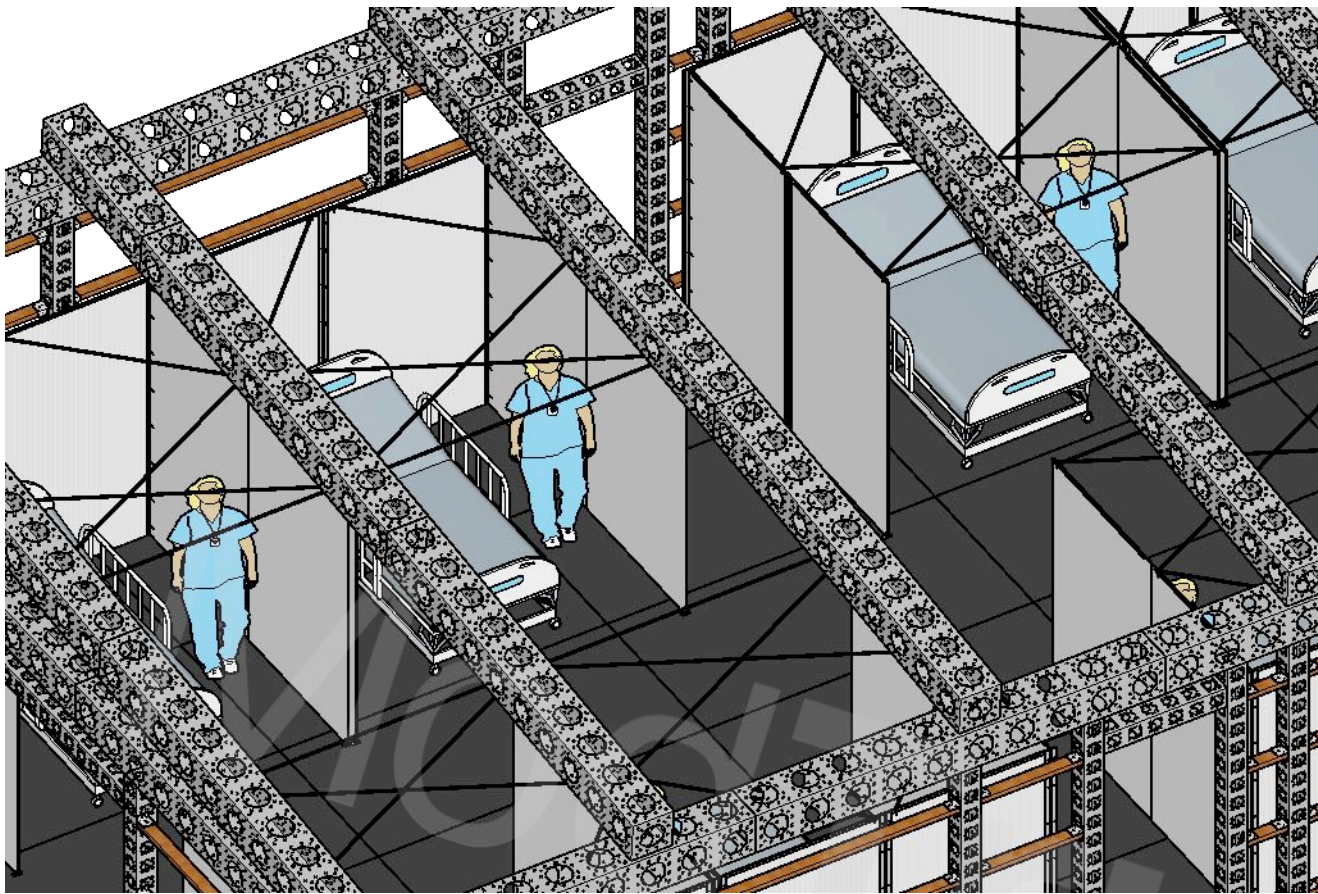


EACH 24'X40' UNIT HAS FOUR EXTERIOR WALLS AND A ROOF MADE FROM 40MM POLYCARBONATE 5 WALL SHEET. WHEN JOINING THE INDIVIDUAL 24'X40' UNITS THE NOW INTERIOR WALLS CAN BE LEFT OPEN OR FINISHED WITH A 10MM POLYCARBONATE INTERIOR WALL SHEET. DOORS ARE OPTIONAL OR DOORWAYS CAN BE LEFT OPEN AS WELL.



# TEMPORARY BUILDING

MODTRUSS C.A.B.  
(COMMON AREA BARRIER) UNITS  
CAN BE USED IN THE  
TEMPORARY BUILDINGS







PREPARED BY:  
**ModTruss** INC

LEASING AND FINANCING  
OPTIONS AVAILABLE

40MM 5 WALL POLYCARBONATE ROOF AND EXTERIOR WALL  
PANELS. AVAILABLE IN CLEAR AND TINTED BLUE FINISH.

CLEAR PANEL HAS 59% LIGHT TRANSMISSION  
BLUE PANEL HAS 20% LIGHT TRANSMISSION  
U-VALUE .25

FLAME RETARDANT

QUICK AND SIMPLE ASSEMBLY

FREE STANDING AND SELF SUPPORTING

PAINTED WOOD FLOOR OR NO FLOOR OPTIONS AVAILABLE.  
ALTERNATE FLOOR FINISHES BY OTHERS.

MODTRUSS WILL PARTNER WITH A CONTRACTOR FOR  
INSTALLATION, MECHANICAL, AND ELECTRICAL  
REQUIREMENTS

CUSTOM SIZED BUILDINGS AVAILABLE



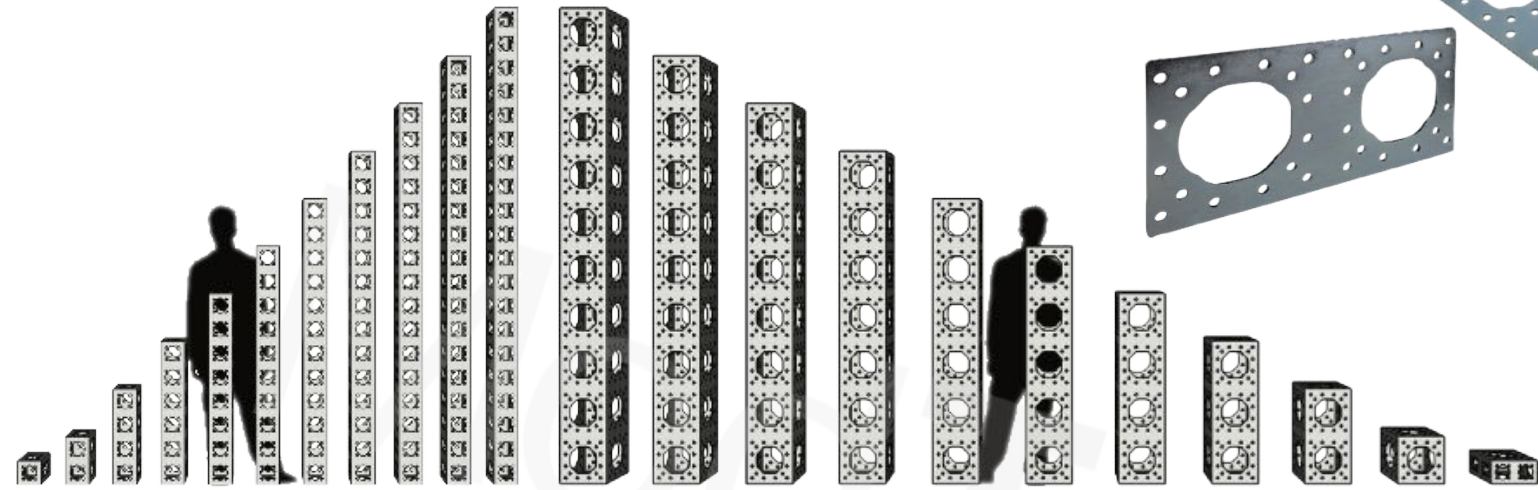
# Project Examples

LARGE  
TEMPORARY  
BUILDINGS



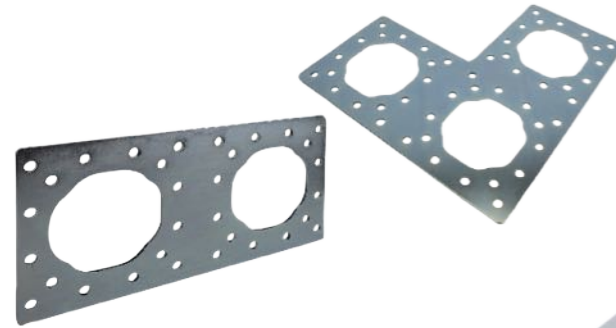


# PRODUCTS

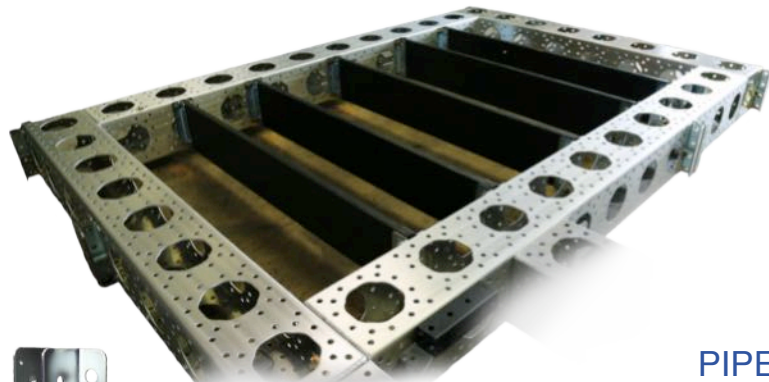
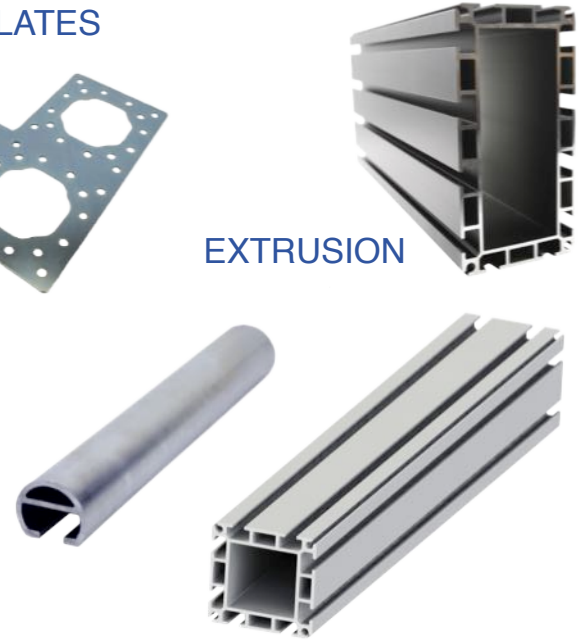


**ModTruss TR Series**

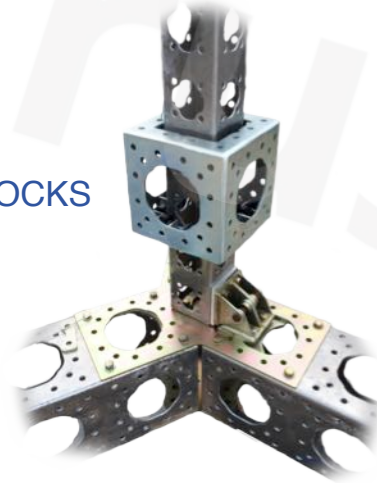
SPLICE PLATES



EXTRUSION



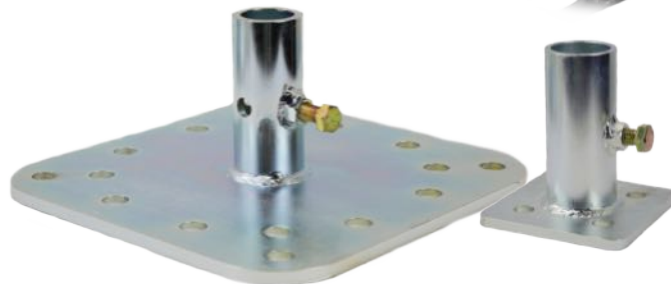
SLEEVE BLOCKS



HINGES



PIPE ADAPTERS



JOIST HANGERS





# WE ARE ModTruss

Mod**Truss**, Inc. is a Wisconsin-based corporation created in 2014 and named for its Universal Building Component- Mod**Truss**. Founder/- CEO, Patrick Santini, has worked decades in the entertainment industry where he was constantly running into design and spatial challenges for stages and various entertainment sets. As a result, he designed and **patented** the ModTruss product (US patent 8,418,425).

Mod**Truss** is a structural building component that is universal to nearly any application. It is available for rental and purchase in multiple lengths of lightweight **aluminum** or robust **steel**. Mod**Truss** Inc. facilitates the engineering, promotion, sale, manufacturing, rental, and lease of the product line.

The Mod**Truss** name was taken from the word '**modular**' which is defined as "designed with standardized components for easy assembly and flexible arrangement". Mod**Truss** is **true** to that definition.

